



Aquatic Park



Fort Mason



Crissy Field



Fort Point



Bike the Bridge!



Sausalito Houseboats

Marin County

PLACES TO SEE

1. AQUATIC PARK	10. HOUSE BOATS	19. CHINA CABIN	28. CAL ACADEMY OF SCIENCES
2. PALACE OF FINE ARTS	11. BOTHIN MARSH	20. TIBURON	29. CONSERVATORY OF FLOWERS
3. WAVE ORGAN	12. OLD MILL PARK	21. RAILROAD MUSEUM	30. WALT DISNEY MUSEUM
4. CRISSY FIELD	13. MUIR WOODS	22. BAKER BEACH	31. HAIGHT ASHBURY
5. FORT POINT	14. HAWK HILL	23. LEGION OF HONOR	32. PAINTED LADIES
6. VISTA POINT	15. TENNESSEE BEACH	24. CLIFF HOUSE	33. FREE GIANTS BIKE PARKING
7. DISCOVERY MUSEUM	16. MOUNT TAMALPAIS	25. SAN FRANCISCO ZOO	34. AT&T PARK
8. SAUSALITO	17. AUDUBON CENTER	26. JAPANESE TEA GARDEN	35. FERRY BUILDING
9. BAY MODEL MUSEUM	18. BLACKIE'S PASTURE	27. DE YOUNG MUSEUM	36. EXPLORATORIUM

FERRY SCHEDULE TO SAN FRANCISCO

Golden Gate Ferry - From Sausalito to Ferry Building
 Weekdays: 10:55am, 12:15pm, 1:55pm, 3:20pm, 4:45pm, 6:10pm, 7:20pm
 Weekends/Holidays: 11:20am, 12:45pm, 2:10pm, 3:50pm, 5:35pm, 6:45pm

Blue & Gold Ferry - From Sausalito to Pier 41
 Weekdays: 11:35am, 12:55pm, 2:10pm, 3:45pm, 5:35pm, 6:55pm, 8:20pm
 Weekends/Holidays: 11:35am, 12:55pm, 3:05pm, 4:35pm, 4:55pm, 6:20pm, 8:00pm

From Tiburon to Pier 41
 Weekdays: 11:15am, 12:35pm, 1:35pm, 3:00pm, 3:55pm, 5:10pm, 8:00pm
 Weekends/Holidays: 10:40am, 12:45pm, 3:00pm, 5:00pm, 6:45pm, 8:15pm

From Tiburon to Ferry Building
 Weekdays: 4:55pm, 5:55pm, 7:05pm

Schedule and capacity subject to change. Electric bikes are allowed ONLY on the Blue & Gold Ferry.

LEGEND

- Bike Route (shoulder)
- Bike Path (off-road)
- Mountain Bike Off-Road
- Advanced Bike Route
- Blue & Gold Ferry
- Golden Gate Ferry
- Cable Car
- F Line Street Car
- BART & Caltrain

- Bike Shops
- Picnic Area
- Restroom
- View Point
- Fire Station
- Beach

SURVIVAL GUIDE

1. Always ride with your helmet on.
2. Ride single file on the right side of the road, trail, and bridge.
3. Always be ready to brake.
4. Cross railroad and street car tracks at a right angle.
5. Be aware of other cyclists, pedestrians, and vehicles.
6. Walk your bike when necessary as conditions can change.
7. Follow all traffic laws.
8. NO bike riding on sidewalks.



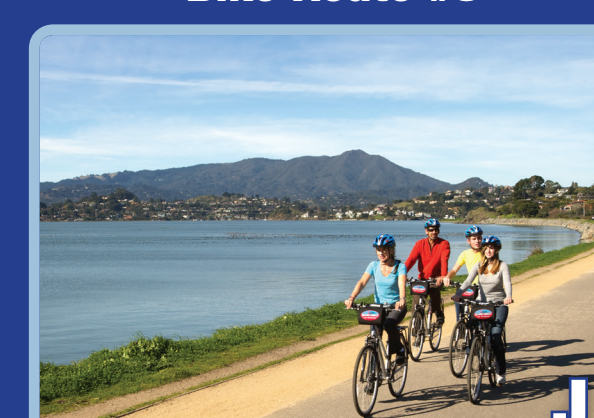
Mill Valley Bike Path



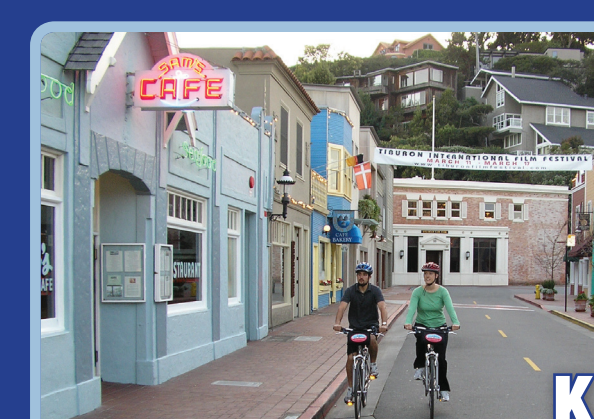
Old Mill Park - Tallest Trees!



Bike Route #8



Tiburon Bike Path



Historic Main Street Tiburon



Return Via Ferry!